

The Power to Personalize

Customize your crimper to suit your needs. The KuriCrimp™ line offers a wide array of options and accessories, including die bases and racks, custom and marking dies and a wide array of MACH and ES4 upgrade options.

TABLE OF CONTENTS

MACH Controller Info	42
MACH Controller Options	42
ES4 Controller Info	43
ES4 Controller Options.....	44
Production Quick Change Tool Info	45
Cleaning and Lubrication Kit	45
Quick Change Tools	46
Production Quick Change Tools.....	46
Electric Foot Pedals	46
Die Racks	47
Die Bases	47
Standard Bases.....	47
Thread Checkers	48



Die Bases, Quick Change Tools and Foot Pedals



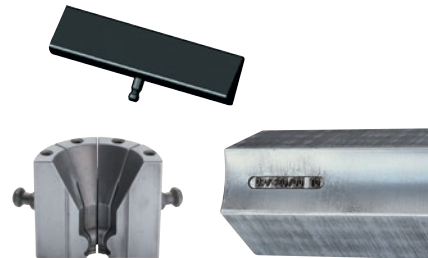
Die Carts and Racks



MACH and ES4 Software upgrade options



Bases and Cleaning Kits



Custom, Interlock and Marking Dies

Because we continually examine ways to improve our products, we reserve the right to alter specifications or discontinue products without prior notice.

MACH Programmable Electronic Controller

UPDATED

INCLUDED ON ALL KC3 SERIES CRIMPERS

MACH Programmable Logic Controller, with 7" wide, full-color, touch-screen display. Delivers the following crimp control options, in an easy to navigate format, improving crimp quality, safety, and reduced crimp cycle times.

Crimp Specification Memory - Stores up to 1,000 separate hose crimp specifications for immediate recall.

Crimp Diameter Calculator – Automatically calculates crimp diameter based on hose ID, OD, shank OD and ferrule thickness.

Multiple Crimp Cycles - Choose between manual and automatic crimping modes, with the ability to toggle between modes during crimping.

Adjustable Reopen Diameter – Allows operator to set smaller reopen diameters, eliminating the need for the dies to fully reset in between crimps, reducing crimp cycle time when doing multiple crimps of the same type.



All MACH models equipped with built-in crimp diameter calculator.

MACH UPGRADE OPTIONS

USB Port Connection - Allows for easy uploading or downloading of crimp specifications in CSV format.

VPS Mode - Allows support from remote desktop connection, including remote updates via vendor portal. Includes standard ethernet connection.

Multi-step Crimp Option - Executes up to 5 different crimp diameters in succession. Reduces cycle time in instances when crimping multiple hoses when more than one crimp diameter is required.

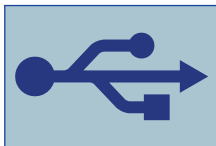
Quality Check Function - Compares actual recorded crimping pressure with pre-determined acceptable pressure range in order to help ensure crimp was performed properly and help catch anomalies.

Pressure Controlled Crimping - Allows for crimping according to force instead of diameter.

KC3 SERIES UPGRADE OPTIONS

Works with all KC3 Series models

USB
PORT



PN# MACH-USB

MULTISTEP
CRIMPING



PN# MACH-MULTI

QUALITY
CHECK



PN# MACH-QUAL

PRESSURE
CONTROLLED CRIMPING



PN# MACH-PRESS

Because we continually examine ways to improve our products, we reserve the right to alter specifications or discontinue products without prior notice.

Siemens ES4 Programmable Electronic Controller

INCLUDED ON ALL KC4 SERIES CRIMPERS



Siemens ES4 Programmable Logic Controller, with 7" wide, full-color, touch-screen display. Provides the following crimp control options and features, in an easy to understand and navigate format, improving crimp quality, safety, and reduced crimp cycle times.

Crimp Specification Memory - Stores up to 1,000 separate hose crimp specifications for immediate recall.

Crimp Diameter Calculator – Automatically calculates crimp diameter based on hose ID, OD, shank OD and ferrule thickness.

Multiple Crimp Cycles - Choose between manual, automatic and semi-automatic crimping modes, with the ability to toggle between modes during crimping.

LAN or WiFi Connection – Allows for easy uploading, downloading or editing of crimp specs via computer, as well as the ability to actively view the ES4 screen on computer or iPhone in order to monitor the crimping process.

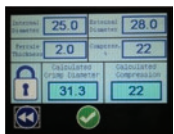
USB Port Connection - Allows for easy uploading or downloading of crimp specifications in CSV format.

Adjustable Reopen Diameter – Allows operator to set a smaller reopen diameter, eliminating the need for the dies to fully reset in between crimps, reducing crimp cycle time when doing multiple crimps of the same type.

Quality Check Function - Compares actual recorded crimping pressure with pre-determined acceptable pressure range in order to help ensure crimp was performed properly and help catch anomalies.

Pressure Controlled Crimping - Allows for crimping according to force instead of diameter.

Service Notifications - Alerts operator to factory service recommendations such as oil changes, filter changes, maintenance inspections, calibrations, etc.



All ES4 models equipped with built-in crimp diameter calculator.



All ES4 models come equipped with built-in factory service suggestion notification alerts.

Because we continually examine ways to improve our products, we reserve the right to alter specifications or discontinue products without prior notice.

ES4 UPGRADE OPTIONS

Self-correcting Digital Caliper – Electronic caliper directly connected to the crimper eliminates the possibility of user error. Requires operator to properly zero out caliper before checking hose and automatically calculates any additional crimp that may be required due to “spring-back.”

Crimp History Data Save – Automatically records crimp history, including operator name, batch number, crimp diameter, crimp corrections and crimp dies used for export onto CSV file.

Multistep Crimp Option – Executes up to 5 different crimp diameters in succession. Reduces cycle time in instances when crimping multiple hoses when more than one crimp diameter is required.

Crimp Spec Barcode Reader – Links your most commonly used crimp specifications to a printable barcode for instant call-up. Bar code scanner included.

Webcam – Camera allows operator to view crimping process through 8" monitor. Includes additional LED lighting for better visibility.



Digital Caliper automatically generates crimp correction for safety.



Barcode Reader instantly calls up saved crimp diameter

KC4 SERIES UPGRADE OPTIONS

Works with all KC4 Series models

BARCODE READER



PN# ES4-BCODE-V59

CRIMP HISTORY DATA SAVE



PN# ES4-DATASAVE

MULTISTEP CRIMPING



PN# ES4-MULTI

WEBCAM



PN# ES4-WEBCAM

DIGITAL CALIPER



Part Number	Works with Crimpers
ES4-DIGCAL-V59	KC4-V59 & KC4-V150
ES4-DIGCAL-V159	KC4-V159 & KC4-V160
ES4-DIGCAL-V250	KC4-V250, KC4-V300 & KC4-V450

Because we continually examine ways to improve our products, we reserve the right to alter specifications or discontinue products without prior notice.

Easy Set™ Production Quick Change Tool

The innovative, Easy Set™ Production Quick Change Tool provides a quicker, easier and safer way to change out crimp dies. Traditional quick change tools must be manually centered and carefully held in place during the die changing process. Even a slight misalignment could cause the dies to be slightly out of place, potentially causing costly damage to the dies or the machine itself. However, the Easy Set™ Quick Change Tool's patented centering guides hold the tool in the correct position throughout the die changing process with minimal user effort, eliminating the risk of user error.



Master dies are guided through built-in channels on the tool on standard volume crimpers.



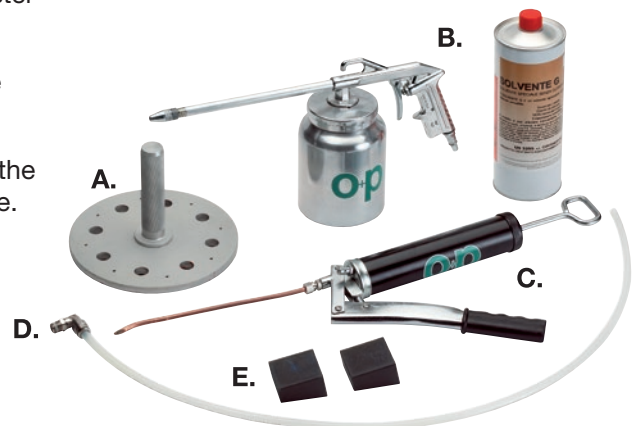
Tool held in place by built-in locking posts inserted into the crimper on high volume crimpers.

Cleaning and Lubrication Kit

Available for the KC1-H130, KC3-H130, KC1-H135, KC3-H135, KC3-H144 & KC3-H170.

Proper crimper maintenance will extend the life of your machine. This involves routinely changing out the used oil, as well as cleaning and lubricating beneath the master dies. This process can be quite messy and time consuming, however the Cleaning and Lubrication Kit includes all the tools necessary for a quick and easy process that can be completed in under 30 minutes.

- A. Master Die Extending Tool** – Holds the master dies in a position slightly pulled away from the cylinder, allowing access to the area beneath for cleaning and lubricating.
- B. Spray Gun and Solvent** – Allows for easy spray cleaning beneath the master dies.
- C. Lubrication Gun** – Allows for easy lubricating beneath the master dies.
- D. Oil Drain Hose** – Connects to an opening on the bottom of the hydraulic cylinder, providing a drain line for used oil.
- E. Lifting Wedges** – Props the machine up from behind, draining the used oil through the front of the machine through the drain hose.



Part Number	Works with Crimpers
CALKIT-H130	KC1-H130 & KC3-H130
CALKIT-H135	KC1-H135 & KC3-H135
CALKIT-H144/170	KC3-H144 & KC3-H170

Because we continually examine ways to improve our products, we reserve the right to alter specifications or discontinue products without prior notice.

View Up To Date Info



◀ SCAN OR VISIT
[KOA.link/
KC-Acc](https://KOA.link/KC-Acc)

Quick Change Tools (QCT)

Part Number	Works with Crimpers
-------------	---------------------

DIE CHANGE TOOL

	KCDCT-H39	KC1-H47E, KC1-H47PM & KC1-H47PI
---	-----------	---------------------------------

QUICK CHANGE TOOLS


	KCQCT-H69	KC1-H83, KC3-H83 & KC4-V59
---	-----------	----------------------------

	KCQCT-H119	KC1-H130, KC3-H130, KC1-H135, KC3-H135, KC3-H170, KC3-H144, KC4-V150, KC4-V159, KC4-V160, KC4-V250, KC4-V300 & KC4-V450
---	------------	---

NEW Image Coming Soon	KCQCT-J67	KC2-J67
------------------------------	-----------	---------

PRODUCTION QUICK CHANGE TOOLS

	KCPQCT-H69	KC1-H83 & KC3-H83
---	------------	-------------------

	KCPQCT-H130	KC1-H130, KC3-H130
---	-------------	--------------------

	KCPQCT-H135	KC1-H135, KC3-H135 & KC3-H144
---	-------------	-------------------------------

	KCPQCT-V59	KC4-V59
---	------------	---------

	KCPQCT-V159	KC4-V150, KC4-V159
---	-------------	--------------------

	KCPQCT-V160	KC4-V160
---	-------------	----------

	KCPQCT-V250	KC4-V250
---	-------------	----------

PRODUCTION QUICK CHANGE TOOL REPLACEMENT PINS

Part Number	Works with Crimpers
-------------	---------------------

KKPQCT-PIN	KC1-H83 & KC3-H83
------------	-------------------

Foot Pedals

Part Number	Works with Crimpers
-------------	---------------------

STANDARD VOLUME CRIMPER ELECTRIC FOOT PEDAL

	PEDAL-KC1	All KC1 Series models
--	-----------	-----------------------

HIGH VOLUME CRIMPER QUICK ELECTRIC FOOT PEDAL

	PEDAL-ES	All KC3 and KC4 models
--	----------	------------------------

Because we continually examine ways to improve our products, we reserve the right to alter specifications or discontinue products without prior notice.

View Up To Date Info



← SCAN OR VISIT
[KOA.link/
KC-Acc](https://KOA.link/KC-Acc)

Die Racks



DIE RACK

Part Number	Works with Crimpers
DIERACK-H69	KC1-H83 KC3-H83 KC4-V59



DIE RACK

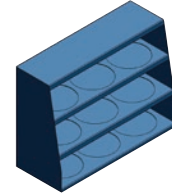
Part Number	Works with Crimpers
DIERACK-H119	KC1-H130 KC3-H130 KC1-H135 KC3-H135 KC3-H144 KC3-H170



DIE CART

Part Number	Works with Crimpers*
DIECART-V119	KC4-V150 KC4-V159 KC4-V160 KC4-V250 KC4-V300 KC4-V450

**Also work with H119 series crimper dies.*



DIE RACK

Part Number	Works with Crimpers
DIERACK-J67	KC2-J67

Die Bases



DIE BASE (12 PC.)

Part Number	Works with Crimpers
DIEBASE-H69	KC1-H83 & KC3-H83



DIE BASE (18 PC.)

Part Number	Works with Crimpers
DIEBASE-H130	KC1-H130
DIEBASE-H119	KC3-H130, KC1-H135, KC3-H135, KC3-H144 & KC3-H170



DIE BASE

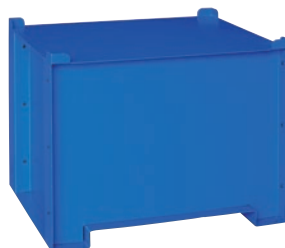
Part Number	Works with Crimpers
DIEBASE-J67	KC2-J67

Standard Bases



BASE

Part Number	Works with Crimpers
KC1-H47E-BASE	KC1-H47E



BASE

Part Number	Works with Crimpers
BASE-H69	KC1-H83 & KC3-H83
BASE-H130	KC1-H130
BASE-H119	KC3-H130, KC1-H135, KC3-H135, KC3-H144 & KC3-H170

Because we continually examine ways to improve our products, we reserve the right to alter specifications or discontinue products without prior notice.

Thread ID Kit

PN# KC-IDKIT

- Includes caliper, ruler, angle gauge, thread gauges and case
- Requires LR44H battery (not included)



Thread Gauge Set

PN# KCIDP-BSPJICMET

- BSP, JIC, and Metric gauges
- Includes male and female threads
- Easily identify 26 common sizes
- Display stand



Thread Gauge Set

PN# KCIDP-ORFSDIN

- ORFS and DIN gauges
- Includes male and female threads
- Easily identify 28 common sizes
- Display stand



Because we continually examine ways to improve our products, we reserve the right to alter specifications or discontinue products without prior notice.