

KC3-H144 Series

UPDATED



DESCRIPTION

The KC3-H144 is a powerful crossover crimper that handles all types and sizes of hydraulic hose and industrial hose up to 4". The new intuitive MACH interface improves efficiency and reduces crimp cycle times. Reduction dies included.

View Up To Date Info



◀ SCAN OR VISIT
[KOA.link/
KC3-H144](http://KOA.link/KC3-H144)

INCLUDED ACCESSORIES



Electric Foot Pedal
PEDAL-ES



Crimp Calculator



Die Segment
Change Tool

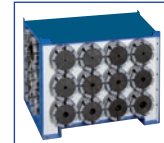
OPTIONAL ACCESSORIES (PGS. 41 – 48)



Quick Change
Die Tool
KCQCT-H119



Production Quick
Change Die Tool
KCPQCT-H135



Die Holder Base
(18 pc.)
DIEBASE-H119



Die Rack (8 pc.)
DIERACK-H119



Back Limit Switch



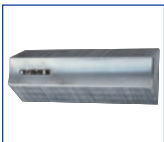
Back Mirror
MIRROR-H144



Cleaning and
Lubrication Kit
CALKIT-H144



Custom Made Dies



Marking Dies

i Refer to pg. 23 for available dies

i Following proper guidance, this crimper's voltage can be field configured by qualified personnel to 208V or 480V 3 PH

Hose Capacity (in)		Crimping Force (ton)
1 – 2 Wire	2 1/2	440
4 SP / 6 SP	2 1/2	
90° Fittings	2	
Industrial	4	

Opening Diameter	
Max. Without Dies (mm / in)	203 / 7.99
Max. With Dies (mm / in)	176 / 6.93
By Die Size (mm / in)	Die Size + 45 / 1.77

Crimper Size	
L x W x H (in)	33.0 x 30.3 x 33.6
Weight (lbs)	1,213

Part Number	Motor Info
KC3-H144-230/3	7.5 HP (230 V) 3 PH

Die Series	Die Range (mm)
H119	6 – 96

**Note: the KCPQCT-H135 works with the KC3-H144 series crimper.*

Hydraulic Fluid	
Type	ISO 46
Amount	110L = 29.06 Gal.

CONTROL MECHANISM **NEW**



MACH

- Full-color, touch-screen display
- Stores up to 1000 crimp specifications
- Built-in crimp diameter calculator
- Adjustable reopen diameter
- USB port option for data transfer
- Industrial hose crimp calculator

Because we continually examine ways to improve our products, we reserve the right to alter specifications or discontinue products without prior notice.